

Alaska Department of Fish and Game

Habitat Section
Southeast Region



113-59-10040-2416 Tributary 4

ADDITION

Water body name:

Survey date: 8/7/2023

Quad: Sitka C-4

Species & Lifestage:

Upper Reach Latitude: 57.531793 **Longitude:** -135.061919

Survey crew: DK, NJ, FC, CD

Lower Reach Latitude: 57.532040 **Longitude:** -135.060183

Findings: We surveyed this uncataloged stream using a backpack electrofisher and baited minnow traps and GPS and captured juvenile coho salmon and Dolly Varden. This stream passes through a 5 ft pipe that crosses the road. Water changes to lower flow and gradient noticeably increases shortly upstream of pipe (Table 1; Figures 1–3). Fish habitat may continue upstream during higher flows.

Recommendations: Add this uncataloged stream to the anadromous waters catalog for rearing coho salmon up to waypoint 517 (Figure 4).

Nomination: Pending

Table 1.—113-59-10040-2416 tributary 4 survey data.

Waypoint	Latitude	Longitude	Notes	Stream Width ft	Stream Substrate	Habitat Features	Gradient %	Sample Effort	Sample Results
477	57.531818	-135.061431	Relatively new 5 ft pipe, well bedded with an upstream grade control structure. Downstream, there is a 1-2 jump caused by debris.	6-8	Large Gravel Small Gravel		2-4	MT	6 CO 1 DV
516	57.531818	-135.062181	Upstream extent of water at current low flow (and at most recent flows); seeps from hillside.	1-2	Fine Organic		4-6	EF	
517	57.531798	-135.061940	Stream thinning with lower water compared to downstream waypoint at culvert. Gradient increases to 4-6% just upstream. Fish escaped net before photos.	2-4	Small Gravel Fine Organic		2-4	EF	2 CO 1 DV



Figure 1. Juvenile coho salmon caught at waypoint 477.



Figure 2. Culvert inlet at waypoint 477.



Figure 3. Downstream of culvert at waypoint 477.

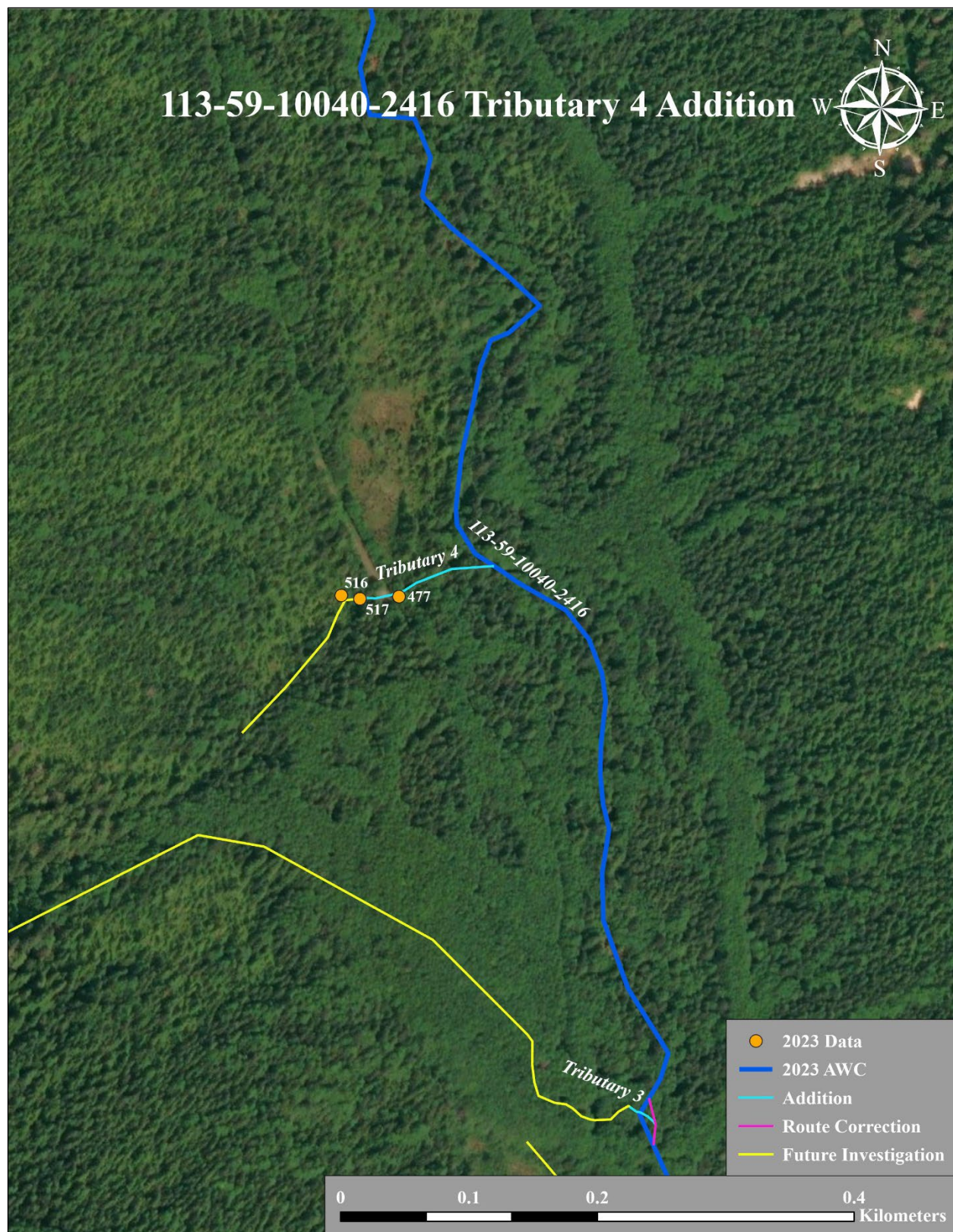


Figure 4. 113-59-10040-2416 tributary 4 addition map.